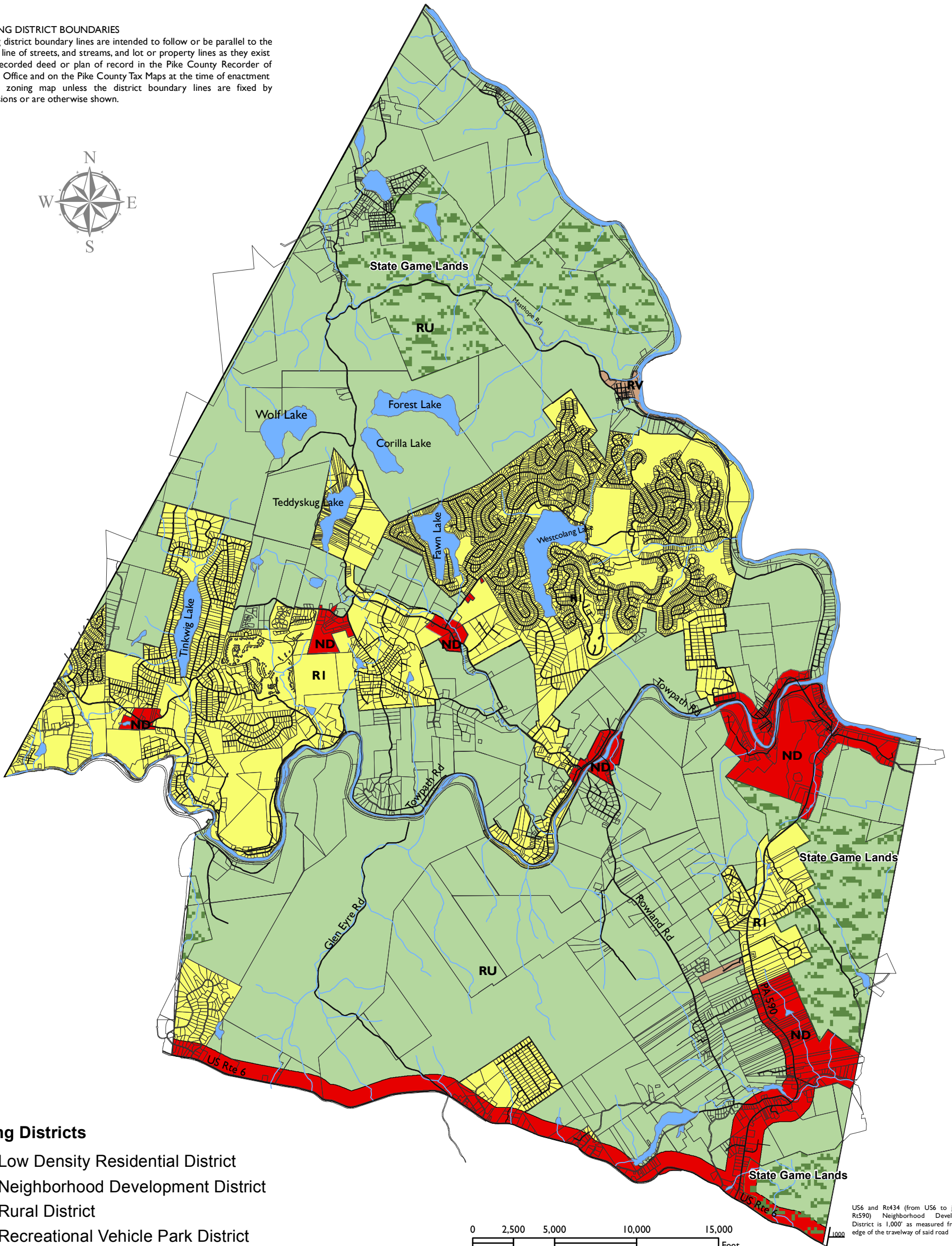


Lackawaxen Township Zoning Map

ZONING DISTRICT BOUNDARIES

Zoning district boundary lines are intended to follow or be parallel to the center line of streets, and streams, and lot or property lines as they exist on a recorded deed or plan of record in the Pike County Recorder of Deed's Office and on the Pike County Tax Maps at the time of enactment of the zoning map unless the district boundary lines are fixed by dimensions or are otherwise shown.



Zoning Districts

- RI Low Density Residential District
- ND Neighborhood Development District
- RU Rural District
- RV Recreational Vehicle Park District

US6 and Rt434 (from US6 to junction Rt590) Neighborhood Development District is 1,000' as measured from the edge of the travelway of said road